

INSTALLATION

Install as many prepay sub meters as required per property whilst retaining your energy company's meter to measure your main supply.

Metro Prepaid meters are coded for use on the Metro Prepaid vending network only.

Sub meters may be installed by any qualified electrician. The installation must comply with NEC and local wiring codes.

Metro Prepaid registered sub meters must be installed below or "downstream" of the main energy company meter.

SETUP



Main House with existing energy company meter
(metered bulk supply)



PREPAYMENT



ELECTRICITY SUB-METER



Tenant ADU

REGISTRATION

Metro Prepaid meters need to be registered on to our vending network by the Landlord of the property where they are installed. Join the hundreds of property owners that register prepay meters with us every month.

Registration can be done via email, phone or online with our Help Desk in as little as 10 minutes.

Registration information includes:

- Property address
- Property owner name, date of birth, contact number & email address
- Nominated bank account to receive payment
- Details of the main power supply including a recent invoice

CONTACT US

24 HOUR HELP DESK

Call : 571 933 8557
E-mail : help@metro prepaid.com
Online : Chat on our website
www.metro prepaid.com

METER SALES & ORDERS

Call us on 571 933 8557, or
E-mail us on orders@metro prepaid.com to locate a wholesaler or retailer close to you.

WHOLESALER STAMP HERE

Metro

Prepaid

SUB METERS FOR TENANTS



COLLECT PAYMENTS

MANAGE USAGE

24 HOUR SUPPORT

www.metro prepaid.com

WHO WE ARE

Metro Prepaid helps Landlords collect electricity payments from their tenants using prepay sub meters.

Metro Prepaid meters, both single and three phase, are available through a national network of electrical wholesalers and retailers.

Landlords use their own electricians to purchase and install the prepay meters at their properties, thereby minimising their installation costs.

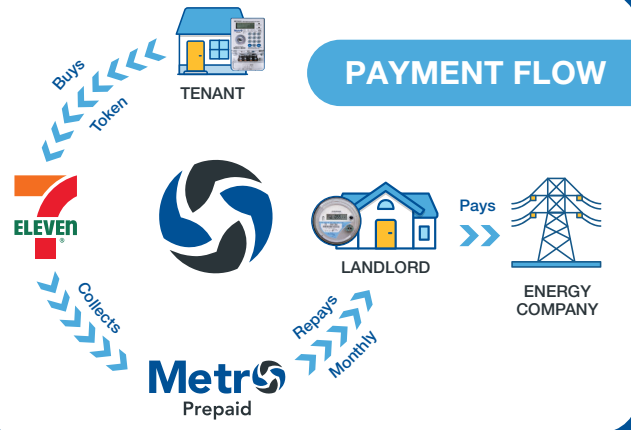
Metro Prepaid collects electricity usage payments from tenants by vending top-ups (secure 20 digit Metro Codes), which are keyed into the prepay meter by the tenants.

Top-up Metro Codes are available through the PayNearMe store network (60,000 stores), or online using any debit or credit card.

The proceeds from the sale of Metro Codes are accumulated for each calendar month and repaid to the Landlord in the first week of the following month. The Landlord uses the funds to pay its bills from the energy company.

Metro Prepaid meters are suitable for:

- Accessory dwelling units (ADU)
- Units and flats
- Trailer homes, mobile homes & boat moorings
- Multi-tenanted commercial buildings and business parks, or anywhere where Landlords supply electricity to their tenants from their main supply and would like to optimize usage



BUYING METRO CODES

Tenants may select one of the following options to obtain Metro Codes to recharge their meters:

IN-STORE

Buy Electricity Top-Up Metro Codes with cash in-store at participating-:



PAY ONLINE

via our website



www.metroprepaid.com



Optimize usage with prepayment:
Leave a smaller carbon footprint.

ADVANTAGES TO LANDLORDS

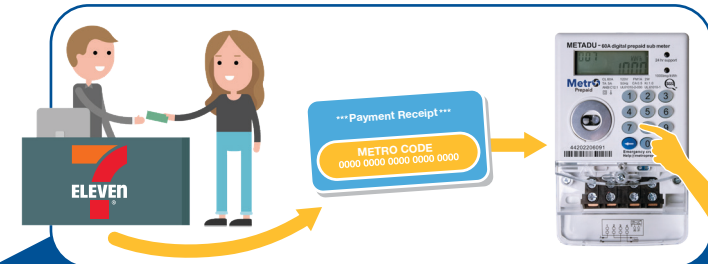
- Instant control over electricity bills
- Option to set the recovery tariff so that tenants pay the Metro Prepaid service fee
- Improved cash flow, as the electricity used through the meter is paid back to the Landlord each month
- Comprehensive reporting emailed monthly
- Collect payments without regular property visits or time consuming administration
- Reliable prepayment meters with a 1 year warranty
- No bother with collecting electricity payments
- 24 hour support via our friendly Help Desk

ADVANTAGES TO TENANTS

- Help Desk on standby 24 hours a day to resolve any metering issues or Metro Code queries
- Convenient Metro Code purchase options available
- No unexpected large bills
- Usage awareness helps reduce consumption
- Metro codes are unique to each meter and very secure
- Emergency credit available if you forget to top-up
- Reduce your carbon footprint

ADVANTAGES TO ELECTRICIANS

- Cheaper meters and faster installation
- Buy the meter on your wholesaler account
- Value added product for landlords
- Technical support available 24/7



When a Metro Code is purchased, the code is printed on a cash slip, e-mailed or sent by text. This Metro Code is then keyed into the sub meter and the meter is recharged.